

MobileView Camera Finder User Guide

Description

MobileView Camera Finder is a user-friendly search tool. It searches for active online devices within your subnet and displays information about them. You can also use this tool to modify the basic network information of cameras and other network devices.

The tool is available in English only.

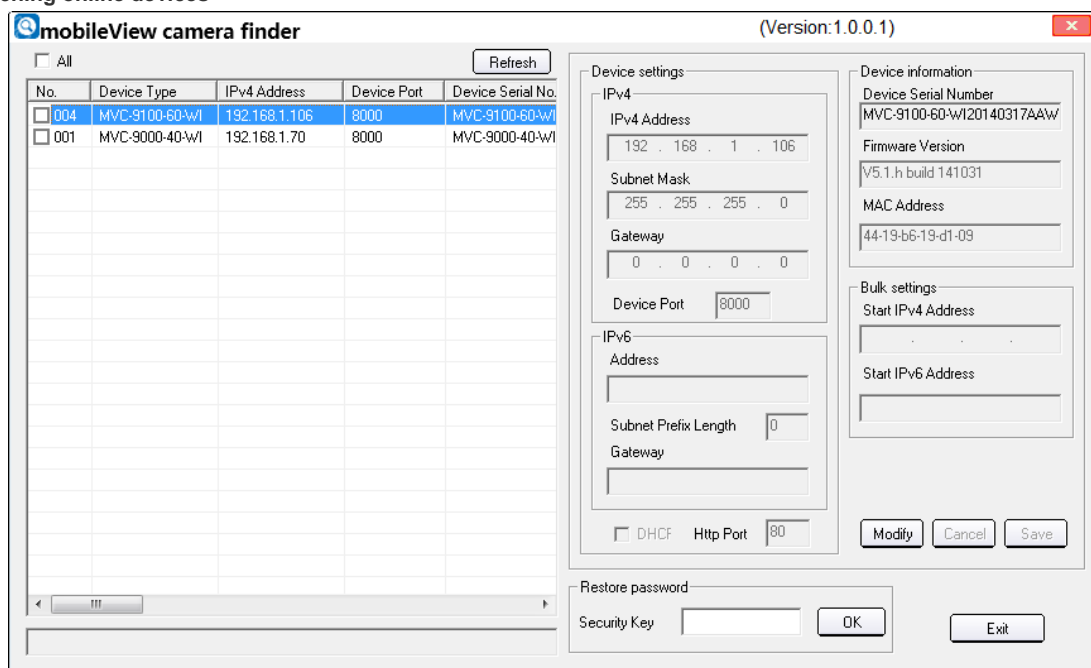
Search online devices

Every 15 seconds the software will look for additional on-line devices from the subnet where your computer is located. Any newly discovered devices will be displayed automatically in the Camera Finder window (See Figure 1).

Note:

- Click **Refresh** to refresh the online device list manually. The newly found devices will be added to the list.
- Click the button on a column heading to sort the information.

Figure 1: Searching online devices



It then displays the following information for each device found:

- Device Type
- IP Address
- Port Number
- Serial Number
- Subnet Mask
- Gateway
- MAC Address
- Software Version
- DSP Version
- Start Time
- Other Network Details

Check basic information

To check the basic information of the device, select the desired device in the device panel (Figure 1). The information is displayed in the **Device information** panel. It shows the Device Serial Number, Firmware Version, and MAC Address (see Figure 2). You cannot change this information.

Figure 2: Basic device information



Device information

Device Serial Number
MVC-9100-60-WI20140317AAW

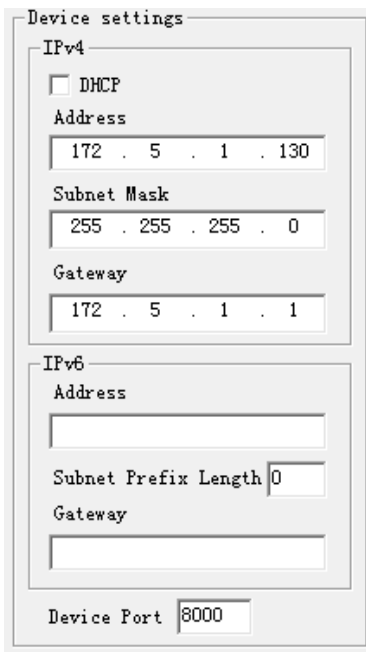
Firmware Version
V5.1.h build 141031

MAC Address
44-19-b6-19-d1-09

Modify the network parameters

To configure the basic network parameters:

1. Select the device to be modified in the device list and click **Modify**.
2. In the **Device settings** panel change the following network parameters: IP Address, Subnet Mask, Gateway, and Device Port.



Device settings

IPv4

DHCP

Address
172 . 5 . 1 . 130

Subnet Mask
255 . 255 . 255 . 0

Gateway
172 . 5 . 1 . 1

IPv6

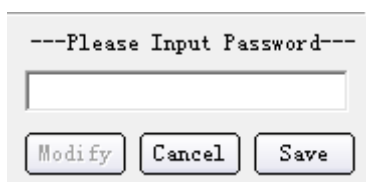
Address

Subnet Prefix Length 0

Gateway

Device Port 8000

3. In the **Password** field, enter the password of the device's admin account, and click **Save** to save the changes.



---Please Input Password---

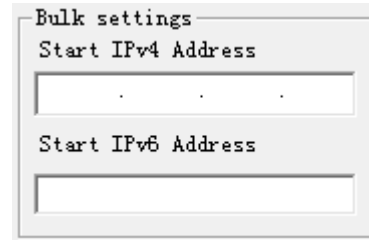
Modify Cancel Save

Bulk settings

If you have many devices that need to be configured, you can use the bulk setting feature to set the IP address easily.

To set multiple devices:

1. Click the checkboxes next to the devices you want to modify and click **Modify**, or click the **All** checkbox to select all available devices.
2. Input the start IPv4 or IPv6 address of the first device.



Bulk settings

Start IPv4 Address

Start IPv6 Address

3. The IP addresses of the other selected devices will automatically be populated with sequential IP addresses.
4. Click **Save** to save the changes.

Note: The subnet mask and gateway address of the selected devices are not modified. To modify the subnet mask and gateway address, the device must be modified individually.

Restore the device default password

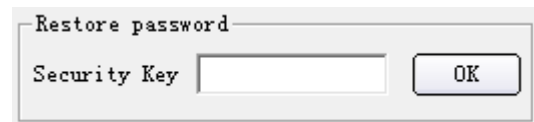
If you lose the password of the selected device, contact Technical Support for a new one.

To reset the device password:

1. Contact Technical Support and give them the serial number as well as the date and time currently displayed on the device.

The serial number can be copied from the **Device Serial Number** field in the **Device Information** section (see Figure 2). It can then be pasted into an email.

2. Input the security key received from Technical Support in the **Restore Password** field and click **OK** to restore the default password. The default password is 1234, or 12345 depending on the device.



Restore password

Security Key OK

Contact information

Contact Technical Support at: 855-MOB-VIEW (662-8439) or MobileViewTS@fs.utc.com.

© 2014 United Technologies Corporation.

MobileView is part of UTC Building & Industrial Systems, a unit of United Technologies Corporation. All rights reserved.